



# Roslindale Gateway Path 25% Concept Design

**July 25, 2018**

Horsley Witten Group  
*Sustainable Environmental Solutions*



# Project Goals

---

- A safer connection for cyclists and pedestrians from Roslindale Village to the Arboretum
- A link for underserved portions of Roslindale to the Arboretum and the Village
- A connection to the Blackwell Path Extension (and the Southwest Corridor)



# 10% Design

HW completes 10% design of Blackwell Path Extension

**2015**

**2016**

Public Site Walk

**2017**

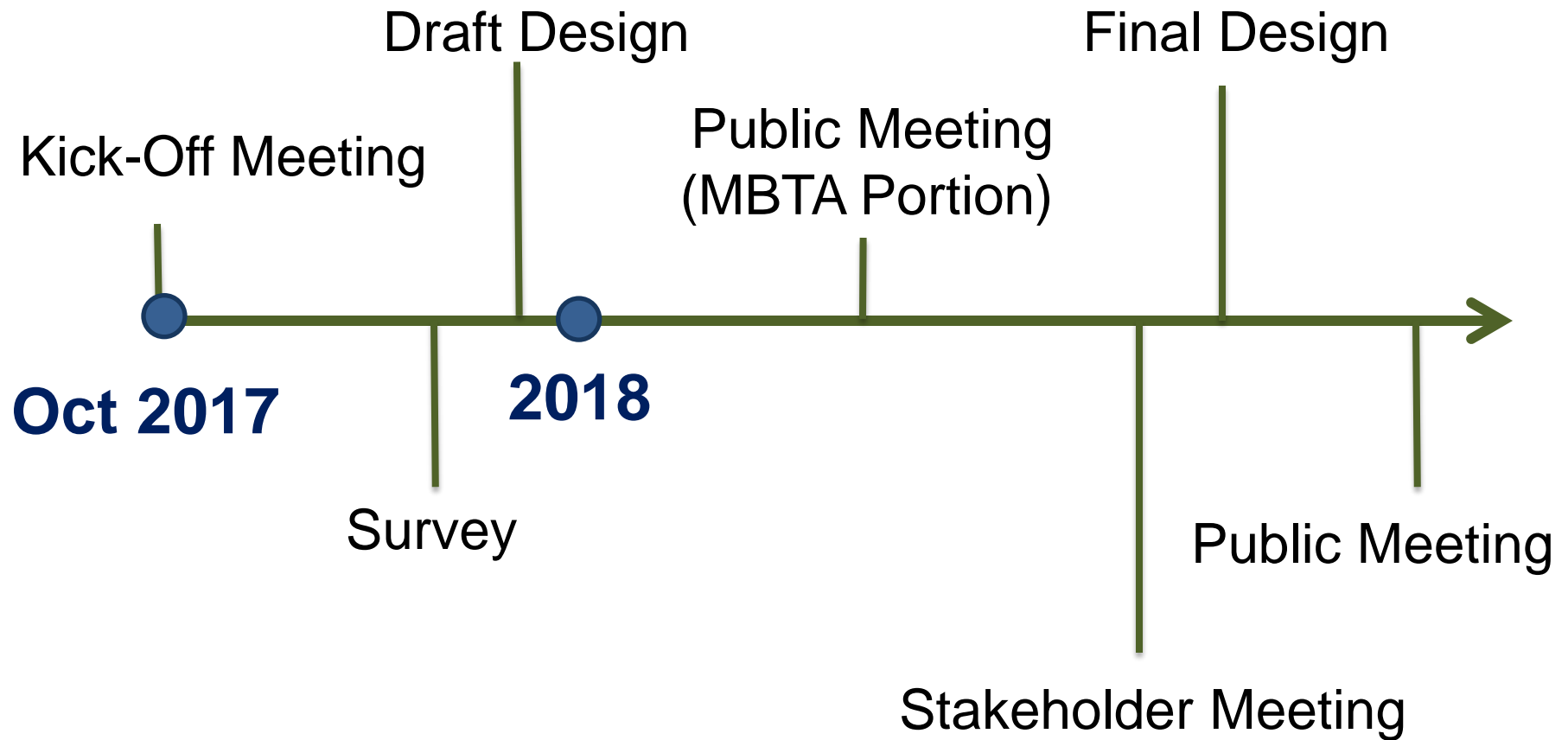
Public Meeting

HW conducts site walk with APC

HW conducts site walks with WalkUP Roslindale, LivableStreets and the Arboretum

HW completes 10% design of Roslindale Gateway Path

# 25% Design





# Scope of Project

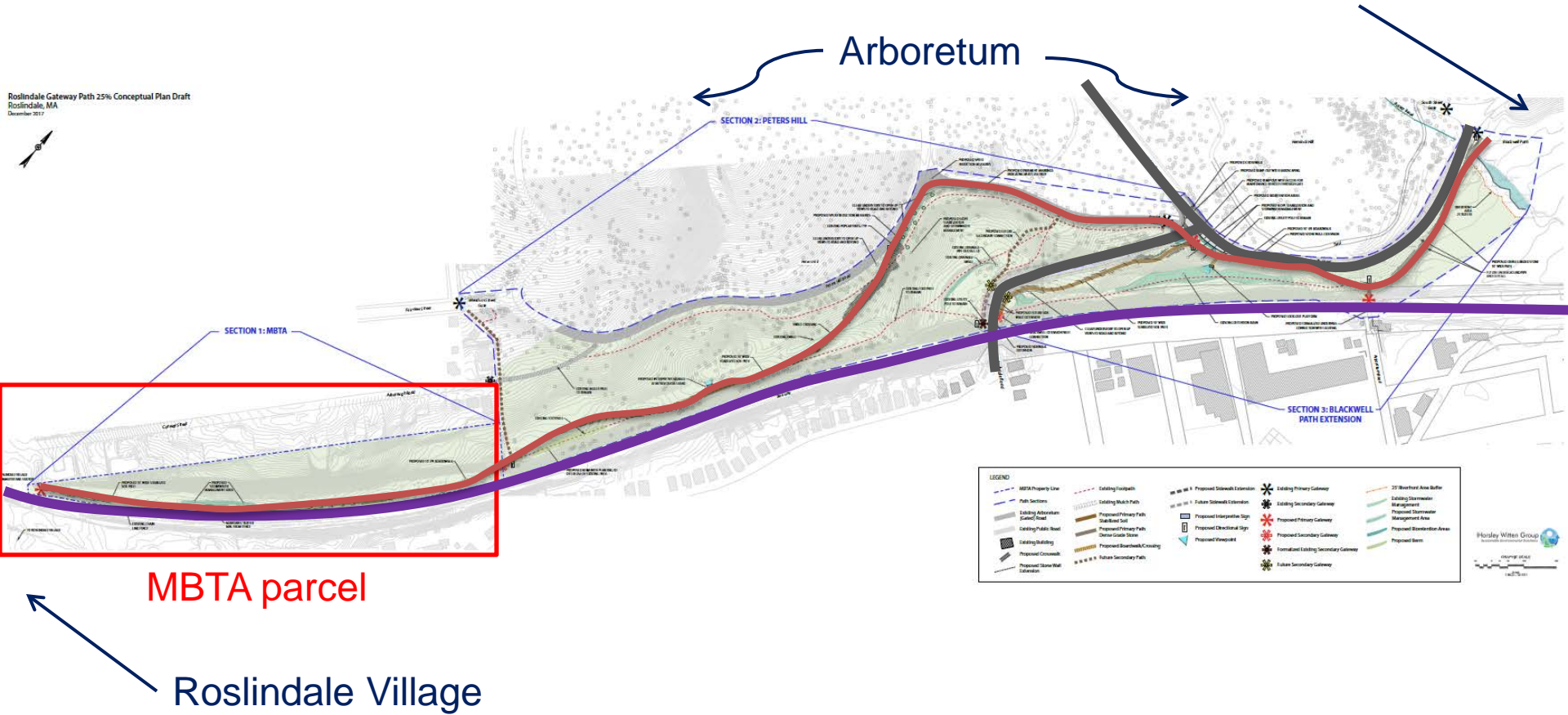
---

- 25% design of entire path
  - Limited survey of the Arboretum
  - Preliminary grading of alignment
  - Identify gateways and secondary connections
  - Identify preferred materials
  - Review options for site amenities
- Evaluate planning-level construction costs
- Develop graphics showing path perspectives

# Primary Path

Blackwell Path to Forest Hills Station

Rosindale Gateway Path 25% Conceptual Plan Draft  
Rosindale, MA  
December 2017

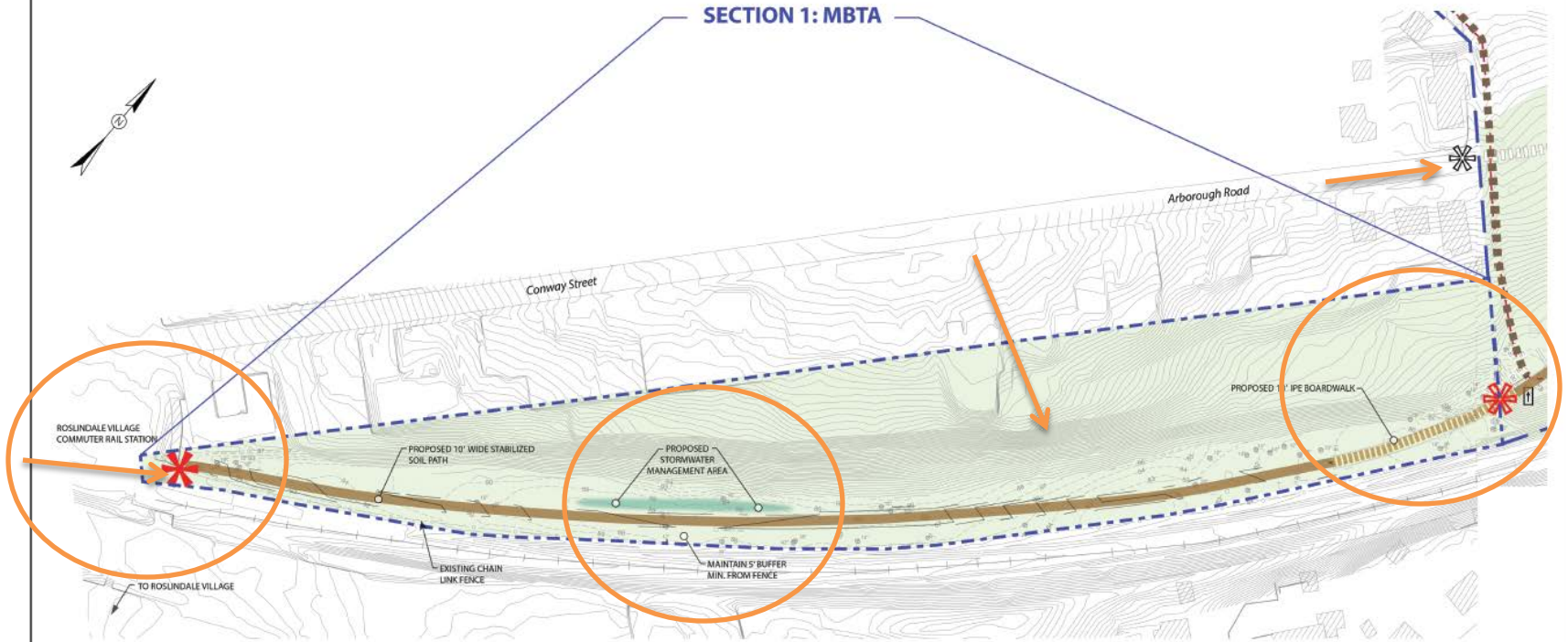


# MBTA Section

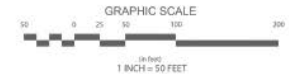
**Roslindale Gateway Path 25% Conceptual Plan Draft**  
 Roslindale, MA  
 December 2017



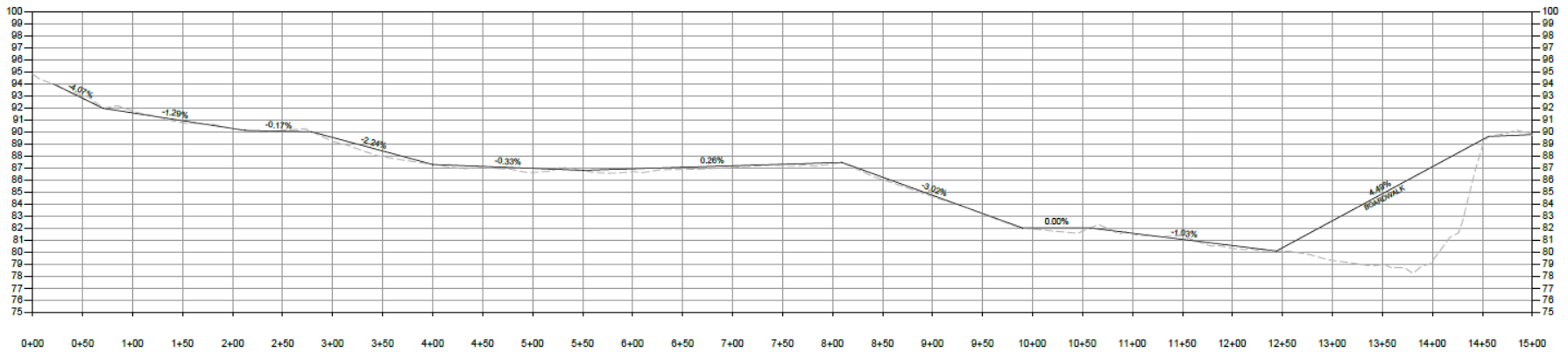
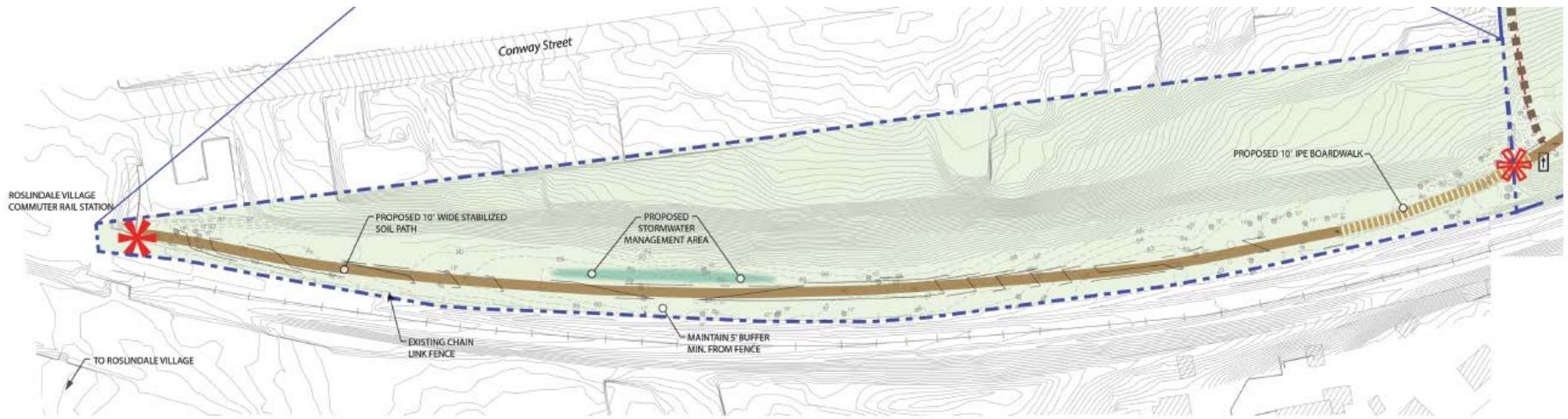
## SECTION 1: MBTA



LEGEND			
MBTA Property Line	Proposed Boardwalk/Crossing	Existing Secondary Gateway	Proposed Directional Sign
Proposed Primary Path Stabilized Soil	Proposed Stormwater Management Area	Proposed Primary Gateway	Existing Building
Future Secondary Path	Existing Footpath	Proposed Secondary Gateway	Existing Mulch Path



# MBTA Section - Grades



MBTA SECTION PROFILE  
 HORIZONTAL SCALE: 1" = 60'  
 VERTICAL SCALE: 1" = 5'



# MBTA Section - Photos

---



# Primary Gateway

---

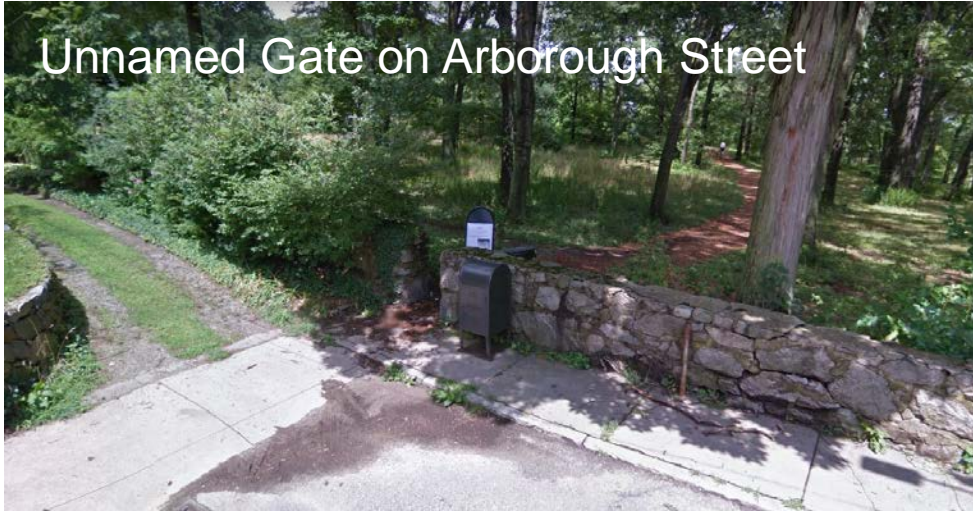
Bussey Brook Meadow Gate



# Secondary Gateway

---

Unnamed Gate on Arborough Street



Unnamed Gate on Walter Street



# Path Materials

---



Stabilized Soil



Ipe Boardwalk

# Safety



In-grade textured surfacing



Vegetated,  
defined  
edge



Pavement  
markings  
and  
reflectors

# Path Rendering

---

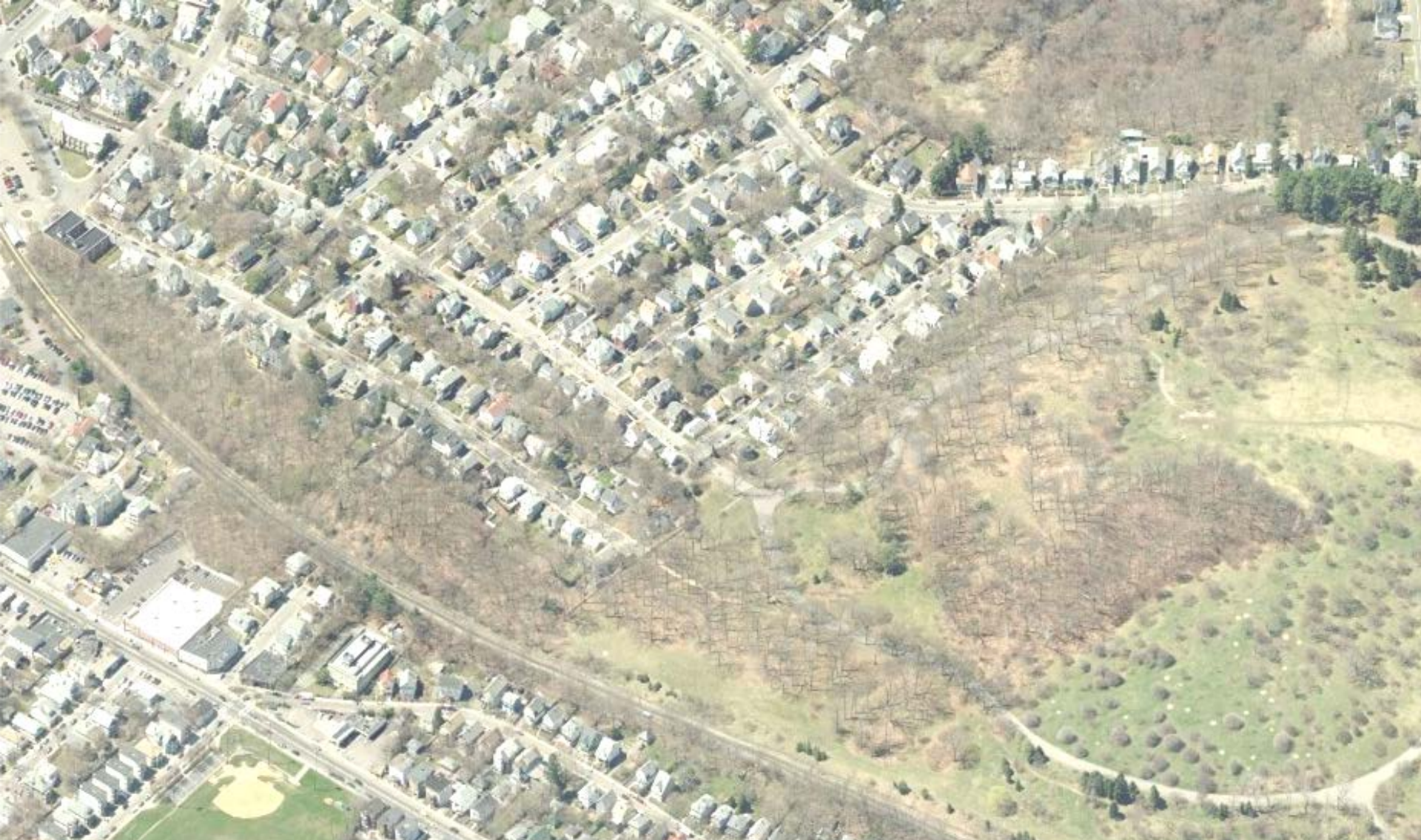




# Next Steps

---

- Complete the 25% conceptual design for MBTA section
- Prepare estimates of probable costs for MBTA section
- Continue to work with stakeholders on the remaining sections of the path



Jennifer Relstab, P.E.

Horsley Witten Group  
*Sustainable Environmental Solutions*

